

Barbering the Wahl Way



# THE WAHL ACADEMY

## SOUTH AFRICA

Barbering Courses Outline



Wahl SA



# THE SIGNATURE BARBER COURSE

The Wahl Academy **Signature Barber** course is an eight day, **in-depth training** program specifically designed to provide you with a **thorough understanding** of the necessary foundational principles involved in delivering an **unparalleled grooming experience**.

This **comprehensive** course not only covers the **barbering basics** of **perfectly-precise cuts and shaves**, but will also provide you with an **expert understanding** of advanced **treatment, waxing and styling techniques**.

Led by a team of **specialist trainers**, boasting over **50 years of combined experience**, our Signature course is delivered in an **intimate masterclass-style** setting of maximum 6 students per class. This allows for unmatched **hands-on mentorship** and **personalised guidance**.

Whether you decide to apply your newly learned skills at a **top-tier salon**, carve out **your unique industry niche**, or **pursue advanced training** in your craft, you're set to **leave a lasting impression of excellence**.



# BARBERING THE WAHL WAY

**1 = 8**

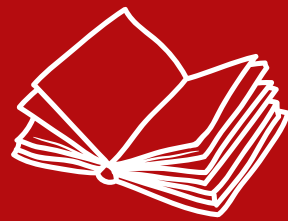
**Extensive  
Course**

**Unmatched  
Skills**



# SIGNATURE COURSE

## CURRICULUM



Day 1

**Cutting Theory**



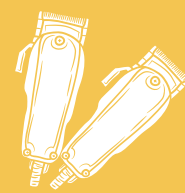
Day 2

**Basic Shears**



Day 3

**Basic Clippers**



Day 4

**Advanced Clipper Cutting**



Day 5

**Fading & Pattern Design**



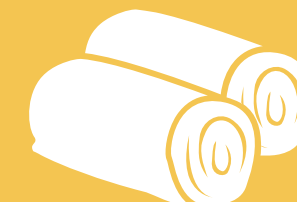
Day 6

**Colour & Styling**



Day 7

**Waxing & Threading**



Day 7

**Hot Towel Shaving**

# COURSE OVERVIEW

## CUTTING THEORY & TECHNIQUES

DAY 1

The Wahl Academy Cutting Theory course is the ideal choice for beginners, expert stylists and barbers, or salon owners seeking to gain a complete understanding of key scissor skills.

As a core competency course, this program also provides a theoretical overview of modern haircutting trends to ensure your post-graduation skillset matches the markets' dynamic wants and needs.

This compulsory course forms the backbone of the Wahl Way by providing a springboard of fundamental skills that can be leveraged to establish yourself as a true craftsman within the cut-throat barbering industry.

## BASIC SHEARING SKILLS

DAY 2

Our Foundational Shear Cutting course offers you an exciting opportunity to learn masterful cutting techniques directly from the Wahl Way Barbering Team.

This hands-on learning experience is designed to give you all the basic tools to boost your styling confidence through practical work sessions and in-depth face-to-face tutorials.

Refine and perfect your lines, graduation, and layering, whilst learning how to seamlessly merge techniques in this one-day dedicated class. Embracing the Wahl cutting methodology, this course will help broaden your skillset and instil the confidence needed to further explore and sharpen your innate talents.



# COURSE OVERVIEW

## CLIPPER CUTTING BASICS DAY 3

Built for barbers, stylists, and hair enthusiasts, our Basic Clipper Cutting course provides an in-depth look at the tools and techniques needed to craft precise hairstyles using clippers, trimmers, and finishers.

Covering both fundamental and advanced skills, this immersive; day-long workshop is perfect for both the novice and seasoned pro seeking to elevate their clipper-cutting expertise.

This course, further, provides a practical overview of the science behind cutting tool selection; usage and maintenance, to ensure a holistic approach to cutting proficiency and professionalism.

## ADVANCED CLIPPER CUTTING DAY 4

The Wahl Bellina stands out as the epitome of professional hair clippers, delivering impeccable cuts consistently. Its ground-breaking snap-on, snap-off blade system facilitates swift transitions between styles and blades, eliminating the need for a complete clipper switch.

Join us for a one-day Advanced Clipper Cutting workshop, designed to help you unlock the Bellina's vast capabilities.

From mastering texturising and root lifting to grasping the art of slicing and point cutting, our team of seasoned stylists are ready to guide you through harnessing the full power of the Bellina.



# COURSE OVERVIEW

## FADING & PATTERN DESIGN DAY 5

Centred on the intricate skills of fading, tapers, and pattern design, this program dives into the meticulous techniques of using clippers and detail trimmers.

From crafting low, medium and high bald fades, to mastering the most sought-after patterns prevalent in contemporary barbershops, this day-long workshop will provide you with knowledge key to unlocking next-level precision and flair in your craft.

Tailored to barbers and hairstylists eager to upskill by sharpening their clipper expertise, this course is the ideal addition to your creative skillset.

## COLOURING & STYLING DAY 6

Aligning with industry benchmarks essential for your trade test, this intensive workshop concentrates on the complex science underpinning choosing your target shade, colour application and removal.

Led by seasoned stylists, this class will provide you with a thorough understanding of colouring tips and techniques that are sure to have you crafting vibrant and unique styles with ease.

Further elevate each style to new heights as you master the techniques of blow-waving, ironing, and the strategic use of styling aids to achieve that flawless finish.



# COURSE OVERVIEW

## WAXING & THREADING DAY 7

Whether you're new to the realm of high-end male grooming or a veteran professional aiming to upskill within your craft, the Wahl Academy Threading and Waxing workshop is an indispensable tool for achieving true craftsmanship.

With an increasing number of men opting for these grooming services, proficiency in threading and waxing has become paramount to industry success.

This one-day course promises a face-to-face interactive session with our team of skilled industry professionals, to ensure that you receive the personalised guidance needed to fully grasp the complex procedures involved in threading and waxing.

## HOT TOWEL SHAVING DAY 8

Celebrating the essence of classic grooming, the Wahl Academy Hot Towel Shaving course will immerse you in the tradition and artistry involved in providing a luxurious traditional wet shave.

Under the guidance of our professional trainers, this course will assist you in obtaining perfectly precise forehand and backhand razor stroke techniques, whilst learning how to use fresh hot towels to elevate your craft to elite.

Enrol for this one-day, high-level course today to ensure that you are equipped to execute both full and partial shaves - with impeccable mastery that is certain to help you stand out in industry.





LEVELLING UP YOUR CRAFT, WITH NEW  
TECHNICAL SKILLS, ENABLES YOU TO

**OFFER EXPERT  
SERVICES AND  
EXPAND YOUR  
INCOME**



**WAHL®**  
PROFESSIONAL

**WA** WAHL  
Academy  
SA

# SIGNATURE BARBER COURSE KIT

Alongside the **various skills and techniques** provided by the **Signature Barber** course, this unmatched training program is **also inclusive** of all the **relevant tools** you will need to begin sharpening your craft. This toolkit, **valued at over R 18 500**, is **yours to keep** and includes the below:



Wahl Bellina



Wahl Cordless  
Detailer



Wahl Vanish



Wahl Magic  
Clip



Wahl Diamond  
Orange



Wahl Thinning  
Shears



Wahl Barber  
Dryer



Wahl Neck  
Brush



3 x Inebrya  
Styling



Shaving Set



2x Male  
Mannequin



Wahl Water  
Spray Bottle



Wahl Cutek  
Straightener



Wahl 5 Star  
Cutting Cape



# COURSE PRICING STRUCTURE

Our innovative approach to course structuring allows you to **select courses** based on your **individual needs**.

This means that you are able to **either pursue** our comprehensive **Signature Barber** course, which covers material from all individual courses, or **sign up for one or more** of these **stand-alone courses** to help you brush up on particular cutting and styling techniques.

Please, note that our Cutting Theory course is required as a pre-requisite for all basic and advanced cutting courses. Own tools required for all courses excluding the Signature Barber course.



# COURSE PRICING

## BREAKDOWN

| Course                     | Fee     | Days | Included                |
|----------------------------|---------|------|-------------------------|
| Signature Barber           | R35 999 | 8    | Lunch + Course Kit      |
| Cutting Theory*            | R1 550  | 1    | Lunch                   |
| Scissor Cutting*           | R2 550  | 1    | Lunch + Mannequin       |
| Basic Clipper Cutting*     | R2 550  | 1    | Lunch + Mannequin       |
| Advanced Clipper Cutting*  | R3 550  | 1    | Lunch + Mannequin       |
| Fading and Pattern Design* | R2 550  | 1    | Lunch + Mannequin       |
| Colouring and Styling*     | R2 550  | 1    | Lunch                   |
| Waxing and Threading*      | R2 550  | 1    | Lunch (Bring own model) |
| Hot Towel Shaving*         | R2 550  | 1    | Lunch (Bring own model) |



**WE LOOK FORWARD  
TO SEEING YOU IN CLASS!**

